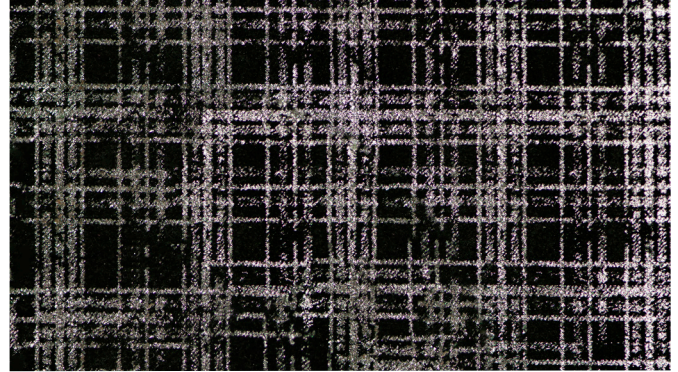


Jamie Stern's Plaid is a glittering foil-on-suede that boasts equal measures of high style and time-honored tradition. Rooted in tartan plaid patterns, these splits are brought to life in bright, striking metallics that create a bold contrast against a background of dark suedes. Ideally suited for low traffic applications such as wall panels, accessories, throw pillows and the upholstery accents on chairs and stools, this is a quality that is sure to catch the eye in any space. Available in four dazzling colorways, Plaid seamlessly melds the supple feel of suede splits with the irresistible luster of metallic foils. Please inquire about custom capabilities.



SPECIFICATIONS

Content	Split Suede with Polyester Film
Country of Origin	Italy
Finish	Pure Aniline
Texture	Soft, supple hand with embedded metallic pattern
Average Hide Size	18 square feet
Thickness	1.2–1.4 mm
Tannage	Chromium Tanned
Custom Color Availability	Please inquire about custom color availability.

APPLICATIONS

Suitable for upholstery in Hospitality, Corporate and Residential applications.

PERFORMANCE

Plaid is suitable for accents and low traffic areas.

FLAME RESISTANCE

Cal Tech. Bulletin 117 (2013, Sec. 1) NFPA 260 Class 1

CARE/CLEANING

Lightly dusting, brushing and vacuuming Plaid on a regular basis is recommended. For further cleaning instructions, third party suede cleaning sets are available.