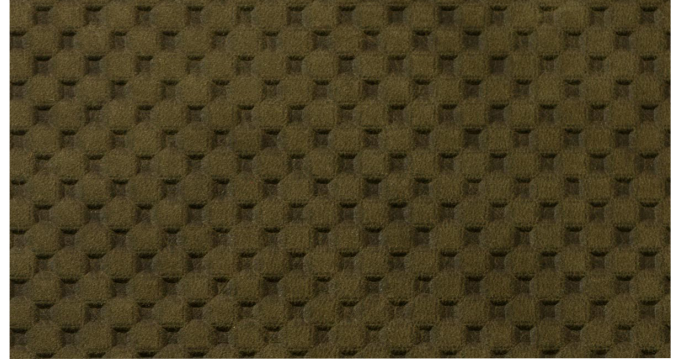


Jamie Stern's Hopscotch is a handsome embossed leather featuring a tight checkered pattern that harmoniously juxtaposes geometric precision with the product's inherent organic beauty. Produced on sides (half hides), this article is embossed with maximum pressure, dwell and heat to ensure that the leather's precise pattern is consistent and even throughout. After this print is applied, the sides are then finished with a protective semi-aniline topcoat to provide a consistent coloration and protect the leather from scratching, staining and fading in sunlight. Produced exclusively in our New York finishing plant, Hopscotch is a leather that is sure to impress in any space or application. Please inquire about custom color availability.



### SPECIFICATIONS

Content	Full Grain or Corrected Top Grain Cowhide
Country of Origin	Finished in the USA from European raw material (full grain) or South American raw material (top grain)
Finish	Semi-aniline
Texture	Embossed decorative pattern with a hand-wiped finish
Configuration	Side (half hide)
Average Hide Size	25–28 square feet (half hides)
Thickness	0.9–1.1 mm
Tannage	Chromium Tanned
Custom Color Availability	Please inquire about custom color availability
Horizontal Repeat	54" (applies to whole hides only)
Vertical Repeat	26"

### APPLICATIONS

Suitable for upholstery in Hospitality, Corporate and Residential applications.

### PERFORMANCE

This leather's robust semi-aniline finish helps protect its rich coloration from scratching and fading in sunlight.

### FLAME RESISTANCE

Cal Tech. Bulletin 117 (2013, Sec. 1)      NFPA 260

### CARE/CLEANING

Use damp cloth to remove dust on a regular basis. Wipe spills and markings as quickly as possible and clean with a damp cloth using a non-alkaline soap. Never use saddle soap, solvent or abrasives.