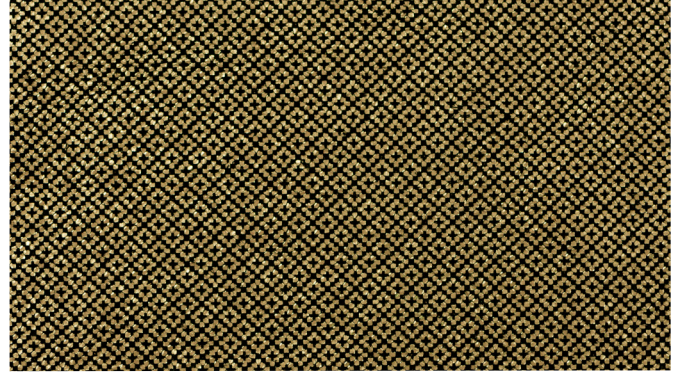


Bijou represents one of Jamie Stern's most popular and vibrant foil-on-suede articles. Dark suede splits are selected to contrast the tight diamond pattern that bursts to life in luxurious metallic colorways. Ideally suited for low traffic applications such as wall panels, accessories, throw pillows and the upholstery accents on chairs and stools, this is a quality that is sure to catch the eye in any space. Available in a pair of dazzling colorways, 18 Karat and Silver Lining, Bijou seamlessly melds the supple feel of suede splits with the irresistible luster of metallic foils. Please inquire about custom capabilities.



SPECIFICATIONS

Content	Split Suede with Polyester Film
Country of Origin	Italy
Finish	Pure Aniline
Texture	Soft, supple hand with embedded metallic pattern
Average Hide Size	18 square feet
Thickness	1.2–1.4 mm
Tannage	Chromium Tanned
Custom Color Availability	Please inquire about custom color availability.

APPLICATIONS

Suitable for upholstery in Hospitality, Corporate and Residential applications.

PERFORMANCE

Bijou is suitable for accents and low traffic areas.

FLAME RESISTANCE

Cal Tech. Bulletin 117 (2013, Sec. 1) NFPA 260 Class 1

CARE/CLEANING

Lightly dusting, brushing and vacuuming Bijou on a regular basis is recommended. For further cleaning instructions, third party suede cleaning sets are available.